

# MINUTES

---

**Meeting:** Corsham Community Area Transport Group (CATG)  
**Place:** Virtual meeting via Microsoft Teams  
**Date:** Wednesday 2 December 2020  
**Time:** 2.00 pm

---

Please direct any enquiries to Kate Davey (Traffic Engineer), via email  
[kate.davey@wiltshire.gov.uk](mailto:kate.davey@wiltshire.gov.uk)

---

	Item	Update	Actions and recommendations	Who
	<b>Date of meeting: 2<sup>nd</sup> December 2020</b>			
<b>1.</b>	<b>Attendees and apologies</b>			
		<p>Present: Cllr Ruth Hopkinson – Wiltshire Council            Cllr Philip Whalley – Wiltshire Council            Cllr Ben Anderson – Wiltshire Council            Cllr Brian Mathew – Wiltshire Council            Kate Davey – Wiltshire Council Highways            David Arnup – Wiltshire Council Highways            Gemma Winslow – Wiltshire Council Highways            Stuart Gregory – Lacock Parish Council            Peter Shaw – Lacock Parish Council            Helen Belcher – Corsham Town Council            James Whittleton – Corsham Town Council            Tony Clarke – Colerne Parish Council            Derek Walters – Notton Resident</p> <p>Apologies: David Martin – Corsham Town Council            Spencer Drinkwater – Wiltshire Council            Ros Griffiths – Wiltshire Council            Richard Campbell – Box Parish Council (no access to meeting).</p>		
<b>2.</b>	<b>Notes of last meeting</b>			
		The notes of the last meeting held on 2 <sup>nd</sup> September 2020 were accepted as a true record.	Noted and agreed.	

3.	<b>Financial Position</b>			
		See Finance sheet. 2020/21 allocation is £10,951.00. 2019/20 underspend was £22,040.16 and the current commitments total £28,208.31 giving a remaining budget of £10,835.60.	Noted and agreed.	
4.	<b>Top 5 Priority Schemes</b>			
a)	<p><b><u>Issue 6682</u></b></p> <p>Bridge between Lacock and Bowden Hill.</p>	<p>There is no signage just before you go over the one way bridge to indicate who has right of way. There either needs to be signage or traffic lights to indicate who has priority. Even a sign to advise motorists to be considerate to oncoming vehicles. On many occasions, there have been stand offs and neither know who has priority. This issue to be investigated further to determine if any improvements can be made. There are existing warning signs in advance of the bridge on both approaches, however they have differing safety messages.</p> <p>Site meeting held on 6<sup>th</sup> August 2019 with KD and Lacock Parish Council. Issues relating to pedestrian safety on the bridge were discussed and subsequent response sent to Lacock Parish Council detailing points considered and suggested possible solution. After group discussion Lacock PC request a reduction in speed limit near the bridge. Group agreed funding £2,500 for assessment. Lacock PC confirmed 25% contribution.</p> <p>Assessment complete. Design plan attached with a cost estimate of approximately £7,000 (CATG = £5,250) (25% = £1,750) for installation of revised speed limit. Group agreed funding for implementation. Lacock PC confirmed contribution. Legal documents with Traffic Regulation Order team for processing. Advert date 4<sup>th</sup> December 2020, end of consultation period 4<sup>th</sup> January 2021.</p>	<p><b><u>DISCUSSION</u></b></p> <p>Consultation period noted. Will provide update on progress in new year.</p>	KD

<p>b)</p>	<p><b><u>Issue 7043</u></b></p> <p>High Street, Lacock – High St/West St request for junction modifications.</p>	<p>Topographical survey has now been received and design work is underway to determine whether a mini roundabout is a workable solution at this location.</p> <p>At November group agreed funding of £5k for further design work, subject to Lacock PC confirmation of 25% contribution of £1250.</p> <p>Lacock PC have carried out consultation and attended meeting with KD in Jan 2020 to discuss alterations to the proposal. Subsequently see attached revised proposal for discussion at meeting.</p> <p>Lacock PC confirmed they have undertaken local consultation all of which was supportive of the proposal and therefore wish to proceed with further design work. PW raised concerns over the proposal and whether the National Trust had made comments. Lacock PC confirmed they were consulted and responded outside of the consultation period with objection to the proposal. BA confirmed support for the proposal. Lacock PC explained this is the first step in improving safety around the village.</p> <p>Group agreed to move proposal forward. Lacock PC confirmed contribution. Survey work for drainage and lighting has now been ordered and awaiting results, anticipate early in the new year.</p>	<p><b><u>DISCUSSION</u></b></p> <p>PW expressed reservations for the project referring to the current consultation on Melksham Bypass and whether this will alleviate the traffic issues in Lacock village adequately.</p> <p>BA and LPC confirmed this is a separate issue relating to achieving formality of right of way at this junction and in turn slow traffic and improve safety. It is not believed the proposed bypass will make a significant difference to this particular site and what is trying to be achieved here.</p> <p><b><u>ACTION</u></b></p> <p>Provide update in new year when surveys are completed.</p>	<p>KD</p>
-----------	--	---	---	-----------

<p>c)</p>	<p><b><u>Issue 6886</u></b> A4 and Cross Keys Road junction. Request for reduction in speed limit.</p>	<p>Concerns raised from residents over the national speed limit restriction from Pickwick through to the Corsham town boundary near the Cross Keys junction. Request for a reduction in speed limit to be considered.</p> <p>Cost estimate for speed limit assessments is £2,500. This issue to be put on hold until the improvement works due to take place in the summer are complete. Corsham TC did confirm support &amp; 25% contribution for assessment. Cross Keys construction project now finished. Group agreed funding for assessment. Corsham TC confirmed 25% contribution.</p> <p>The speed limit assessment is currently in progress with Atkins, however, there has been a delay in completing all of the analysis due to Covid-19 restrictions. Atkins are looking at a safe method to undertake journey time surveys which requires risk assessment approval. If approved they anticipate carrying out rest of assessment during December.</p>	<p><b><u>ACTION</u></b> Chase Atkins to complete review and provide recommendations.</p>	<p>KD</p>
<p>d)</p>	<p><b><u>5-20-4 / 5-20-6 (previously Issue 6876)</u></b> Request for 20mph speed limit on residential streets around Corsham.</p>	<p>Request for 20mph speed limit on residential streets in Corsham including Pickwick Road, Newlands Road, Pound Pill leading to Prospect. This proposal is aligned with the Corsham Public Realm study and part of the Corsham Strategic Plan 2018-2022.</p> <p>Cost estimate for speed limit assessments is £2,500. 25% contribution of £625. Corsham TC have now submitted plans for Corsham and Neston to be assessed. Group agreed funding. Corsham TC confirmed contribution.</p> <p>20mph speed limit assessment is in progress, however we are currently waiting to carry out the data collection/traffic surveys until the national restrictions surrounding Covid-19 are relaxed in order to get a true reading of 'normal' traffic speeds for the assessment.</p>	<p><b><u>DISCUSSION</u></b> Group agreed to defer the traffic surveys for the time being whilst there are strict Covid-19 restrictions in place which may alter the normal traffic volumes/speeds data.</p> <p><b><u>ACTION</u></b> Group agreed for JW and KD to agree the best time to undertake the survey and to liaise in January 2021.</p>	<p>KD/JW</p>

<p>e)</p>	<p><b><u>5-20-3</u></b></p> <p>A350 near the Junction with Notton Academy and opposite Mons Lane junction.</p>	<p>The Notton residents are requesting Lacock Parish Council and Wiltshire Council Highways improve the safety for those using a convenient A350 crossing point near Notton Academy, used by pedestrians, cyclists, horse riders. This is one of 8 footpath crossing points from Lackham to Whitehall and south of Lacock that were cut off when the A350 was originally upgraded.</p> <p>Since then A350 traffic volumes have increased substantially, especially in recent years, raising the risk of pedestrian/cyclist accidents along this unrestricted speed limit length of road. A student from Notton Academy was sadly killed at this crossing point some years ago.</p> <p>The A350 has separated some of the local communities of Lacock. As the A350 continues to develop further as a major trunk road, this feeling of separation is likely to be more evident when people become very reluctant to try to cross this road.</p> <p>Also, Notton residents are concerned about risk of accidents when cars turn right on to the busy A350 southbound into high speed traffic. There have been near misses.</p> <p>Site meeting undertaken on 4<sup>th</sup> November 2020, attending KD, DA, BA from Wiltshire Council, SG and PS from Lacock PC. All issues discussed on site, please see site meeting notes attached to end of agenda. To be discussed at meeting.</p>	<p><b><u>DISCUSSION</u></b></p> <p>Notton resident expressed concerns and explained in more detail the issues at this site. BA and LPC agreed this is a difficult place to attempt to cross the A350. Suggested pedestrian survey to confirm numbers of pedestrians crossing at this location, however if there is no viable solution to improve crossing movements at this point there is little benefit to proceeding.</p> <p>Notton resident confirmed its not simply a case of pedestrians crossing here but also vehicle speeds and overtaking at the Notton junction.</p> <p><b><u>ACTION</u></b></p> <p>It was agreed that this issue has evolved into something different therefore the chair has requested this issue be closed and a new issue raised which Lacock PC can review.</p>	<p>Lacock PC</p>
-----------	--	--	---	------------------

<p>f)</p>	<p><b><u>5-19-2 (previously issue No 7105)</u></b>            Pickwick Road/Newlands Road Pedestrian Crossing.</p>	<p>At the southern end of Newlands Road, just after its junction with Pickwick Road, there is a signal-controlled crossing. There have been a number of near misses at this crossing where motorists (presumably those unfamiliar with the area) have turned sharply left off Pickwick Road and haven't been able to stop before the crossing. Cars have narrowly missed pedestrians who have, on some occasions, had to jump out of the way to avoid being hit.</p> <p>This issue was raised previously, and the group agreed to close with no further action in June 2019. Since this time there have been further issues raised with a request for a warning sign on Pickwick Road. Corsham TC confirmed that this junction will be looked at through the Public Realm project which is being conducted outside the CATG. However, this will be a long-term project and consider a short-term solution is required.</p> <p>Proposal plan attached to end of agenda. Estimate £700 (CATG: £525, 25% contribution: £175). To be discussed at meeting.</p>	<p><b><u>DISCUSSION</u></b>            Corsham TC asked for clarification on the proposed location of the warning sign. KD explained it was the most visible position with sufficient space to erect this sign. Group approved the funding proposal to installation. Corsham TC confirmed contribution.</p> <p><b><u>ACTION</u></b>            Implement proposal.</p>	<p>KD</p>
-----------	--	--	--	-----------

5.	<b>Other Priority Schemes</b>		
a)	<p><b><u>Issue 6829</u></b></p> <p>Lacock village – restriction for tourist coach restriction.</p>	<p>Preliminary design sent to Lacock Parish Council for consideration. The estimated costs of this scheme including data collection surveys before and after to analyse success of signing scheme is in the region of £6,000. A 25% contribution would be £1,500. Lacock PC confirmed they do not support this proposal. Subsequently withdrawn and issue removed from priority list. Lacock PC to escalate the issue at strategic level. Group agreed to leave on agenda for now.</p> <p>Lacock PC explained they have written to Western Gateway regarding the impact Melksham bypass will have on the village and coaches. Requests for strategic plan made to Cllr Wayman and MP Michelle Donelan. It was also suggested to contact Cllr Philip Whitehead – Leader of Wiltshire Council to highlight these issues further.</p>	<p><b><u>DISCUSSION</u></b></p> <p>Group agreed to leave on the agenda for now and monitor.</p>
b)	<p><b><u>Skynet Drive</u></b></p>	<p>Legal have now confirmed that the lease agreements are complete. Section 106 agreement for Bellway homes to release funding for the installation of Toucan crossing will be triggered at first occupancy.</p> <p>Shared use path construction at southern end Skynet Drive/Park Lane junction is to be completed during January/February 2019 in preparation for the crossing and cycle link at the north end. Bellway Homes funding received. Design for Toucan crossing is underway, and the legal advertisement being consulted on during September 2019 – no objections received.</p> <p>Anticipated construction phase programmed for November/December 2020.</p>	<p><b><u>DISCUSSION</u></b></p> <p>Construction ongoing through December and January.</p>



<p>c)</p>	<p><b><u>Issue 5818</u></b> <b><u>Issue 6364</u></b></p> <p>Park Lane, Corsham - issues with parking in vicinity of Chestnut Grange &amp; Purleigh Road.</p>	<p>Monitor parking issues as the developments on Park Lane progress and collate data received from local residents on the inappropriate parking at this location.</p> <p>Group agreed to leave on agenda and continue to monitor until developments have been completed. RH raised potential future issue with increased on street parking due to one unit wanting a change of use. New regulations allow for this without a requirement to apply or impose conditions, therefore this may lead to further parking issues at this location.</p> <p>DA confirmed patching sites have been submitted and are in hand.</p>	<p><b><u>DISCUSSION</u></b> Group agreed to leave on the agenda for now and monitor.</p>	
<p>d)</p>	<p><b><u>5-19-8</u></b></p> <p>Greenhill/Westwells junction, Neston – visibility issues at junction.</p>	<p>Resident has raised concerns regarding the visibility on both approaches to the Greenhill junction making is very difficult to emerge out of the junction. Request for mirrors, speed restriction, improved signing to highlight the junction.</p> <p>It is Wiltshire Council policy not to erect mirrors on the Public Highway. The speed limit in this location is already subject to a 30mph speed restriction. There might be scoping to investigate junction warning signs, however warning signs are not usually considered in a 30mph speed limit as drivers should acknowledge they are likely to encounter vehicle/pedestrian movements in built up areas. Possibility to investigate if there is an option to clear vegetation to improve visibility.</p> <p>GW to write to landowner requesting they cut back vegetation for improved visibility. GW to give update at meeting.</p>	<p><b><u>DISCUSSION</u></b> GW confirmed homeowner has now cut back vegetation to boundary line, however there is a narrow verge width at this site resulting in limited visibility splay. JW commented that working towards the implementation of the 20mph speed limit might improve this issue in the future.</p> <p><b><u>ACTION</u></b> No further action. Remove and close. Inform original requester.</p>	<p>KD Corsham TC</p>

<p>e)</p>	<p><b><u>5-19-9</u></b> Freestone Way, Corsham – position of bus stop.</p>	<p>The position of a bus stop in Freestone Way, Katherine Park. The bus stop is on the pavement but there is a grass verge between the pavement and kerb meaning that passengers must cross over the grass to get on and off the bus. The verge gets muddy, slippery and wet. Reported issue through MyWiltshire App but asked to submit through CATG as developer did not provide hardstanding for bus stop at time of installation.</p> <p>GW update – planning was unable to locate a S38 plan for this development. Passenger Transport confirmed they are happy for alterations to be carried out and offered to move it if necessary. To be discussed further.</p> <p>Information received from Passenger Transport regarding allocated bus stops on Freestone Way. See end of agenda for details. To be discussed at the meeting.</p>	<p><b><u>ACTION</u></b> Corsham TC to review the information submitted at this meeting and provide response on whether this issue is supported.</p>	<p>Corsham TC</p>
<p>f)</p>	<p><b><u>5-20-2</u></b> Lacock Road, Corsham – verge deterioration, request for footway/kerbing installation.</p>	<p>Request for new footway and kerb line along Lacock Road on the southern side for the extent of the properties.</p> <p>PW explained the issues with parents parking on the double yellow lines and issues being cause by the muddy verge for residents. A footway along the south side of Lacock Road has been looked at before through TAOSJ in 2010 and 2015 but was not recommended due to large scale drainage works and relocation of utilities. It was felt this solution would also encourage more parents to drive and park if there was a footway introduced.</p> <p>GW confirmed road markings are in place and visible. KD has requested targeted enforcement by Parking Services team at school times.</p>	<p><b><u>ACTION</u></b> Chase Parking Services for update on targeted enforcement.</p> <p>Supply Corsham TC with ballpark estimate for kerbing the length of the verge at this site Jan 2021.</p>	<p>KD/RH  KD</p>

6.	New Requests / Issues			
a)	5-20-5 Memorial Garden, Market Place, Colerne	Colerne PC have improved disabled access to the Memorial Gardens and are now requesting a dropped kerb and bus stop hard standing area.  To be discussed at the meeting.	<p><b><u>DISCUSSION</u></b>            Group agreed to move to top priority when resources are available.</p> <p><b><u>ACTION</u></b>            Undertake site visit with Colerne PC to confirm parameters of the project.</p>	KD
b)	5-20-7 A365 Devizes Road, Box	Increased use of the A365 by HGVs following the diversion by B&NES due to works at the Cleveland Bridge. Road surface has deteriorated and large vehicles making houses vibrate. Request for resurfacing works. Signs to divert HGVs from using this route as a diversion.  To be discussed at the meeting.	<p><b><u>DISCUSSION</u></b>            Group agreed this is a maintenance issue which is being dealt with by BM and DA.</p> <p><b><u>ACTION</u></b>            Remove from agenda and close.             Inform original requester.</p>	BM/DA   KD  Box PC
c)	5-20-8 Leafy Lane, Rudloe, Box	Concerns over traffic speed along Leafy Lane, increased volume of traffic and the safety of pedestrians crossing the road. This issue was previously raised with site meeting held between BA and KD. A proposal was submitted but rejected by Box PC at that time. Since this time traffic has increased due to nearby developments.  To be discussed at the meeting.	<p><b><u>DISCUSSION</u></b>            Referred to previous proposal submitted 2/3 years ago. Group agreed to revisit this issue and move to top priority when resources are available.</p> <p><b><u>ACTION</u></b>            Arrange site visit with BA to reassess requirements for the proposal.</p>	KD

d)	<p>5-20-9 Junction of Quarry Lane/Old Martins Croft, Colerne</p>	<p>Residents concerned about sight lines when exiting Old Martins Croft, particularly cyclists. Residents requested mirror however they are not permitted on the public highway. Request for site visit to assess the junction and see if anything can be done to improve the situation.</p> <p>To be discussed at the meeting.</p>	<p><b>DISCUSSION</b> Confirmed parked cars are reducing visibility at the junction. Introducing waiting restrictions is the only feasible option to remove parking from the junction. DA agreed to refresh the give way markings at the junction.</p> <p><b>ACTION</b> Refresh road marking - spring 2021.</p>	<p>DA KD Colerne PC</p>
----	--	---	--	---------------------------------

7.	<b>AOB</b>			
	Lacock 7.5t weight restriction	<p>Lacock PC raised issues they are having trying to set up lorry watch for the village. They have approached Devizes Police several times with no response. Looking for some advice on how to progress this initiative.</p>	<p><b>ACTION</b> Send Lacock PC link to trading standards to assist with lorry watch set up.</p> <p>Contact Barney Appleton (Police) for advice.</p> <p>If no progress made contact KD to send a response to Devizes Police contact (Tracy Ince) for action.</p>	<p>GW Lacock PC Lacock PC</p>

8.				
	<b>Date of Next Meeting</b>	Thursday 4 <sup>th</sup> March 2021 @ 10am virtual meeting via Microsoft Teams.		

## Corsham Community Area Transport Group

### Highways Officer – Kate Davey

#### 1. Environmental & Community Implications

1.1. Environmental and community implications were considered by the CATG during their deliberations. The funding of projects will contribute to the continuance and/or improvement of environmental, social and community wellbeing in the community area, the extent and specifics of which will be dependent upon the individual project.

#### 2. Financial Implications

2.1. All decisions must fall within the Highways funding allocated to Corsham Area Board.

2.2. If funding is allocated in line with CATG recommendations outlined in this report, and all relevant 3<sup>rd</sup> party contributions are confirmed, Corsham Area Board will have a remaining Highways funding balance of **£10,835.60**

#### 3. Legal Implications

3.1. There are no specific legal implications related to this report.

#### 4. HR Implications

4.1. There are no specific HR implications related to this report.

#### 5. Equality and Inclusion Implications

5.1 The schemes recommended to the Area Board will improve road safety for all users of the highway.

#### 6. Safeguarding Implications

6.1 There are no safeguarding implications

#### 7. Recommendations

**Corsham Area Board are asked to approve recommendations**

## Corsham CATG

### FINANCIAL SUMMARY

#### BUDGET 2020-21

£10,951.00 CATG Allocation 2020-21

£22,040.16 2019-20 Underspend

#### Contributions

Corsham Town Council - Park Lane Parking Restrictions	£0.00 Confirmed - on hold (£1000 TBA)
Corsham Town Council - Neston to Corsham dropped kerb project	£1,364.00 Invoiced
Lacock Parish Council - High St/West St mini roundabout design work	£1,250.00 Confirmed
Corsham Town Council - Cross Keys speed limit assessment	£625.00 Confirmed
Colerne Parish Council - horse warning signs	£263.75 Invoiced
Lacock Parish Council - bridge speed limit extension implementation	£1,750.00 Confirmed
Corsham Town Council - 20mph speed limit assessment	£625.00 Confirmed
Corsham Town Council - Pickwick Road Warning Sign	£175.00 TBC

#### Total Budget

£39,043.91

#### Commitments

Corsham Park Lane parking options	£4,000 Estimate - on hold
Neston to Corsham dropped kerb project	£5,453 Actual
Lacock High St/West St mini roundabout design work	£5,000 Estimate
Cross Keys speed limit assessment	£2,500 Estimate
C151 Colerne Horse Warning signs	£1,055 Actual

#### New Schemes

Lacock bridge pedestrian improvements - speed limit implementation	£7,000 Estimate
Corsham 20mph speed limit assessment	£2,500 Estimate
Corsham, Pickwick Road Warning Sign	£700 Estimate

**Total Spend / Commitments** £28,208.31

**Remaining Budget** £10,835.60

## Notton Site Meeting – Wednesday 4<sup>th</sup> November 2020 @ 2pm.

Attendees: Kate Davey (Wiltshire Highways), David Arnup (Wiltshire Highways), Cllr Ben Anderson (Wiltshire Council), Peter Shaw (Lacock PC), Stuart Gregory (Lacock PC).

### DISCUSSION

Discussion on site regarding pedestrians crossing at the small section of footway leading out to A350 crossing over into the junction of Mons Lane on the east side of the A350.

Local residents are concerned about safety when using the crossing point and wish improvements to be made to improve safety at this site.



This location is not a designated public right of way. This site is not a designated crossing point.

As highway engineers both David and I agree that there is no way to make this location safe to cross and do not feel comfortable carrying out any works that would encourage pedestrians to cross. There are no dropped kerbs and although it is noted people are crossing here this is not a designated crossing point and when you reach the other side of the carriageway you are walking into the junction mouth of Mons Lane.

Residents suggested solutions:

- Lower the speed limit – This is not a practical solution to this issue as the volume of traffic is more of a problem than the speed. The amount of traffic using the A350 will not decrease with a lower speed limit and therefore pedestrians will continue to struggle to find a gap in the traffic.
- Central refuge island – At this point the centre of the carriageway is currently positioned within the right-hand turn lane for Mons Lane junction. This would not be a safe position to install a refuge island as well as the fact that once you arrive at the other side of the A350



you are walking into the junction mouth of Mons Lane. Wiltshire Council would not encourage that manoeuvre under any circumstances.

- Warning signing on A350 on both approaches – This is not something Wiltshire Council can consider as an option as previously stated this is not classed as a safe place to cross the road and therefore cannot facilitate any works that would encourage pedestrians to do so.

It is noted that there is an existing horse crossing and pedestrian crossing at the Whitehall junction, which although is a further distance is a more suitable and safer place to cross.

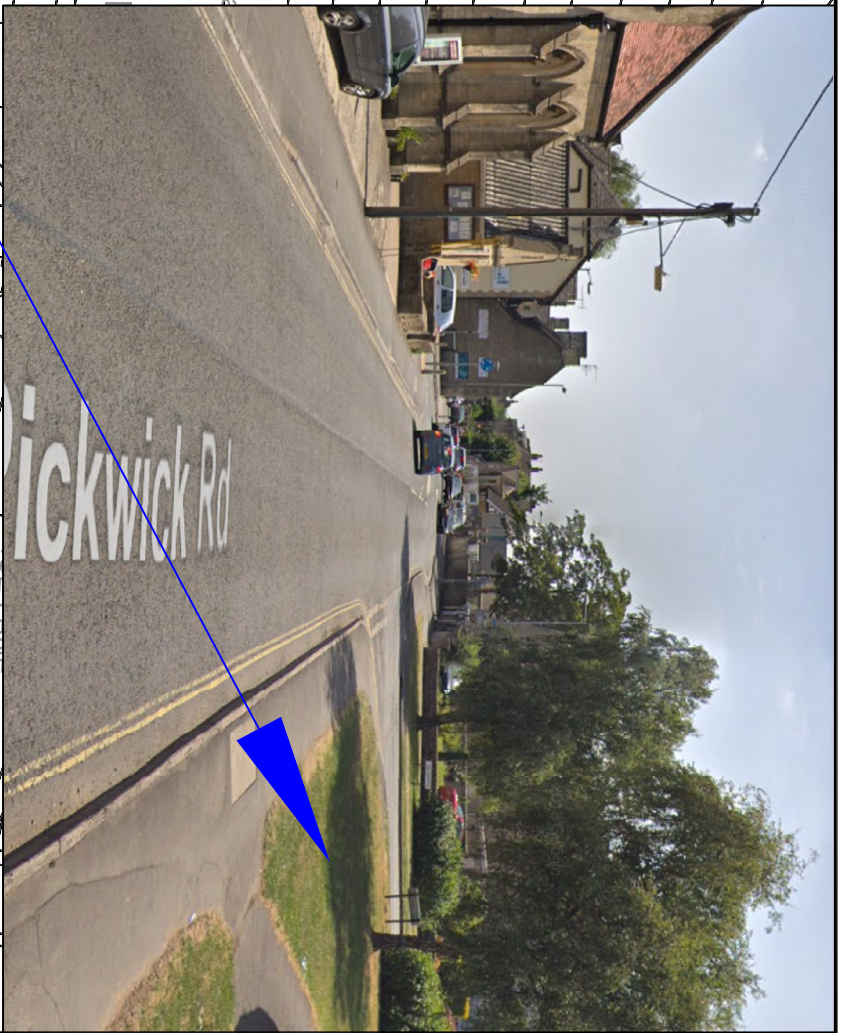


# CORSHAM

Recreation Ground

Recreation Ground

MERITON A



NOTES:

This map is reproduced from Ordnance Survey material with the permission of Ordnance Survey on behalf of the Controller of Her Majesty's Stationery Office  
© Crown copyright.  
Unauthorised reproduction infringes Crown Copyright and may lead to prosecution or Civil Proceedings.  
Wiltshire Council (100049050) 2020



**Traffic & Network Management**  
County Hall, Bythesea Road, Trowbridge  
Wiltshire, BA14 8JD  
Tel: 0300 4500100  
Website: www.wiltshire.gov.uk

REV	DATE	DRAWN	CHECK	APPV	DESCRIPTION
0	NOV/20	KAD	GTR	DMT	ORIGINAL
A					
B					
C					
D					
E					
F					

**PROPOSAL PLAN**

PROJECT:  
CORSHAM CATG SCHEME  
PICKWICK ROAD, CORSHAM  
WARNING SIGN

DRAWING TITLE:  
PROPOSAL PLAN

SCALES:	NOT TO SCALE	SHEET SIZE:	A3
DRAWING No.:	KAD/CORM/D001	REVISION:	0
FILE REF.:	L:\TET\AB\CORSHAM\2020\21SCH\EMES\PICKWICK\DESIGN		

## BUS STOP LOCATIONS – FREESTONE WAY

### INFORMATION PROVIDED BY PASSENGER TRANSPORT

- Location X – has a Wiltshire Council yellow timetable information case – it is positioned on a lamp post next to 160 Freestone Way (adjacent to Gorse Place). There is no bus flag, hard standing or raised kerb.
- Location Y – has a Wiltshire Council yellow timetable information case – it is positioned on a lamp post next to 120 Freestone Way (adjacent to Bluebell Mead). There is no bus flag, hard standing or raised kerb.
- Location Z – has a Wiltshire Council yellow timetable information case – it is positioned on a lamp post near to 76 Freestone Way (opposite Nine Acre Drive and close to the block of flats). There is no bus flag, hard standing or raised kerb.





I think the reason for no bus flags maybe to avoid residents complaining about having a permanent feature outside their homes. However, looking at the legal bus company registration, it has been registered as a normal bus stopping service so technically not a 'Hail and Ride' so bus should only be stopping at designated stops only which of course there are none!

We should also consider proper bus stop poles so that we can attach flags and raised kerbs if the CATG/PC money can stretch that far? What sort of time scales are you looking at fulfilling their requests – this financial year?

Happy to discuss further but am concerned that some residents may object to the scheme.

Also, whilst I was on site, I had noticed that there are people parking around the roundabout near flats (location Z) Even cars needed to cross over the traffic island exiting the roundabout to pass these cars – This is a bottleneck and within this consultation is there likely to be any parking restricted (Double Yellows) in this area?